

NOTES; UNLESS OTHERWISE SPECIFIED:

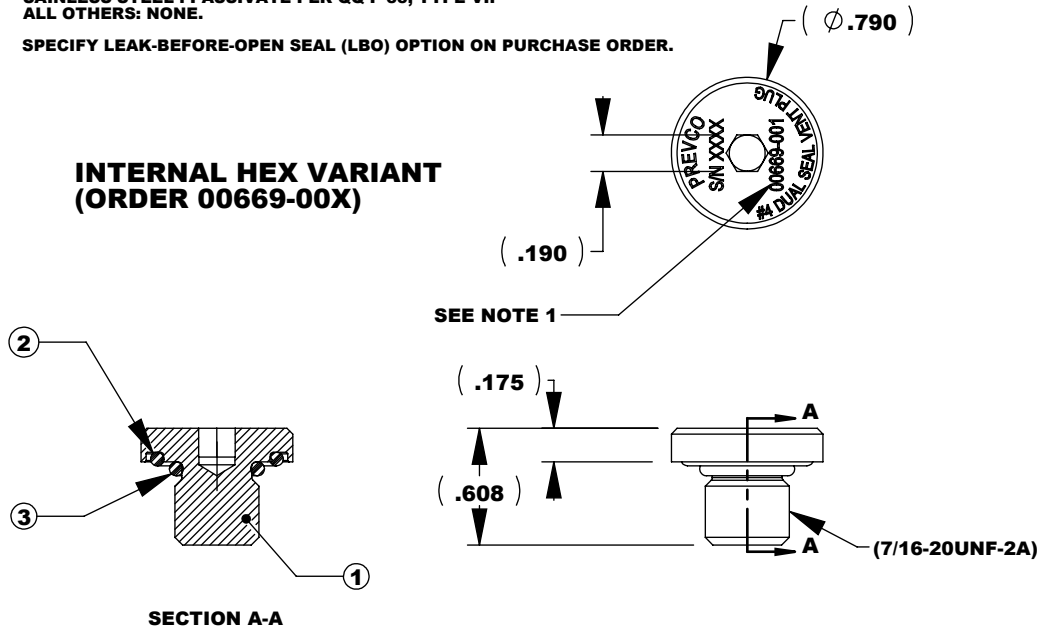
- MATERIAL, INTERNAL HEX HEAD VARIANT:**
 00669-001, FOR STAINLESS STEEL, TYPE 316 PER QQ-S-763, MAKE FROM 00448-001
 00669-002, FOR TITANIUM, GRADE 5, ASTM-B-348, MAKE FROM 00448-002
 00669-003, FOR MONEL K-500, MAKE FROM 00448-003
 00669-004, FOR COPPER BERYLLIUM, MAKE FROM 00448-004

- MATERIAL, EXTERNAL HEX HEAD VARIANT:**
 00669-101, FOR STAINLESS STEEL, TYPE 316 PER QQ-S-763, MAKE FROM 01298-001
 00669-102, FOR TITANIUM, GRADE 5, ASTM-B-348, MAKE FROM 01298-002
 00669-103, FOR MONEL K-500, MAKE FROM 01298-003
 00669-104, FOR COPPER BERYLLIUM, MAKE FROM 01298-004
 00669-105, FOR COPPER BERYLLIUM, MAKE FROM 01298-005

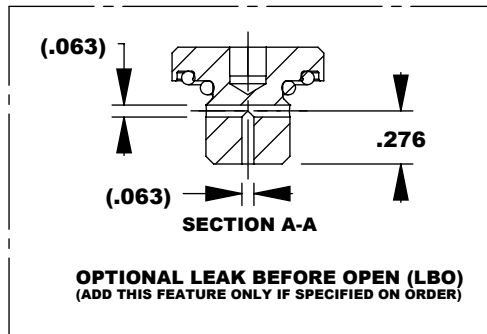
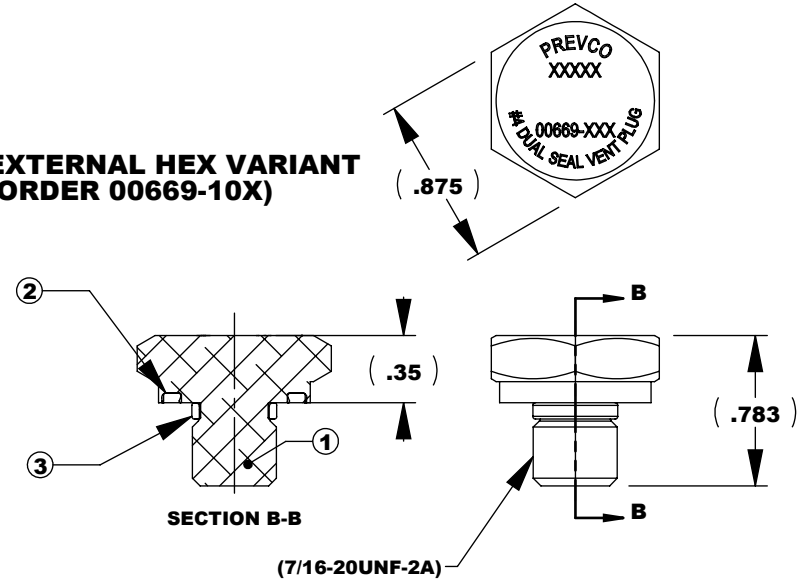
- FINISH:**
 SAINLESS STEEL : PASSIVATE PER QQ-P-35, TYPE VI.
 ALL OTHERS: NONE.

- SPECIFY LEAK-BEFORE-OPEN SEAL (LBO) OPTION ON PURCHASE ORDER.**

**INTERNAL HEX VARIANT
(ORDER 00669-00X)**



**EXTERNAL HEX VARIANT
(ORDER 00669-10X)**



BOM Table

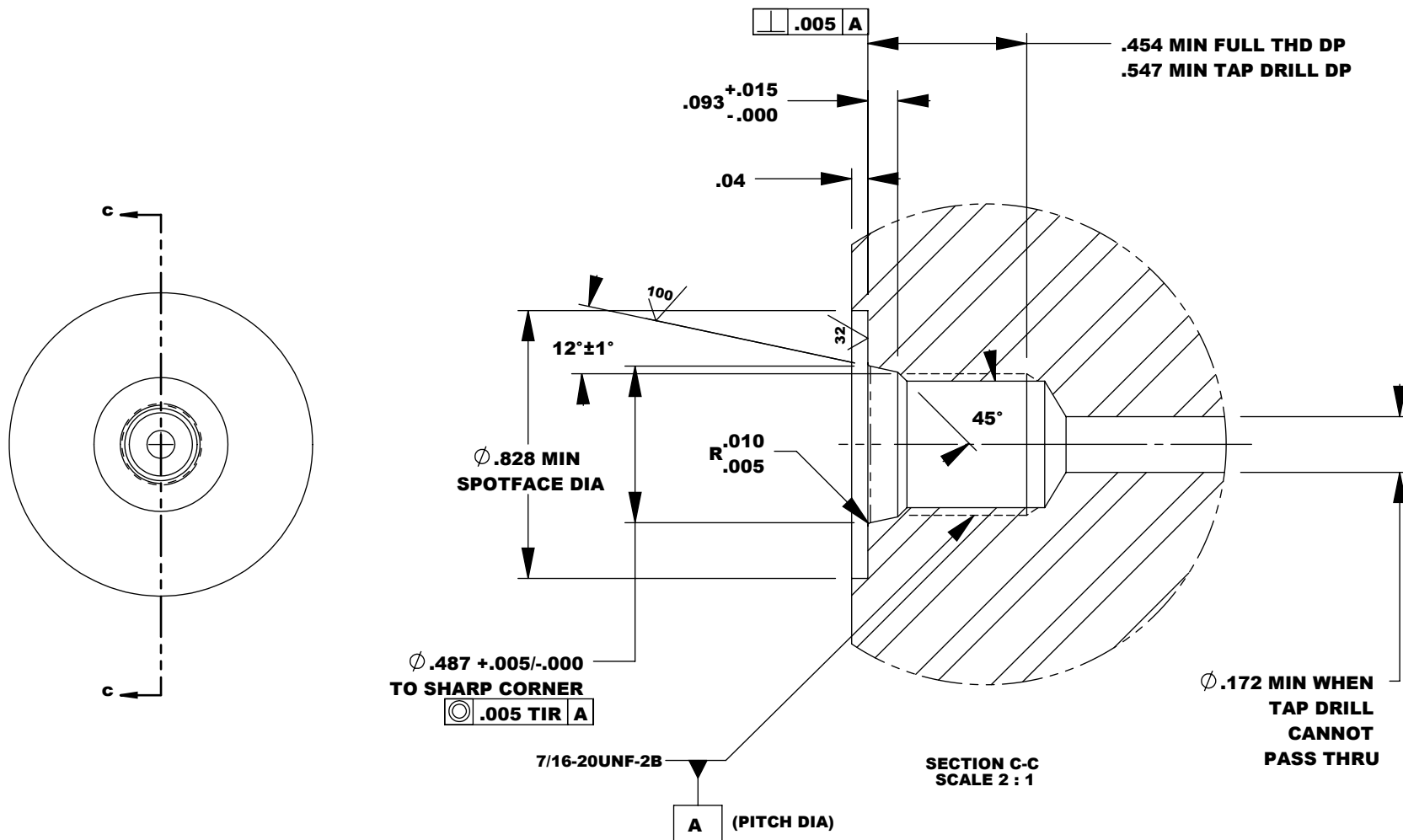
ITEM NO.	PART NUMBER	DESCRIPTION	00669-000/QTY
1	00448-000	Dual Seal No. 4 Plug	1
2	2-015	O-ring, Plug Face, 2-015, 90 Duro	1
3	3-904	O-ring, Plug Corner Seal, 3-904, 90 Duro	1

Proprietary Note: All data and information contained or disclosed by this document is confidential and proprietary information of Prevco Subsea LLC and all rights therein are expressly reserved. By accepting this material the recipient agrees that the material and the information therein is held in confidence and in trust and will not be used, copied, reproduced in whole or in part, nor its contents revealed in any manner to others, except to meet the specific purpose for which it was delivered.

TOLERANCES UNLESS NOTED			
.X	.XX	.XXX	ANGLES
±.050	±.010	±.003	±.5°
CONCENTRICITY .004 TIR			
PRIMARY UNITS ARE INCHES			

CUSTOMER PREVCO SUBSEA LLC	
PROJECT 00669-000	
ISSUED BY:	ISSUED DATE:

DESCRIPTION DUAL SEAL VENT PORT (#4) - INTERFACE DRAWING			
DRAWN BY:		CHECKED BY:	
DRAWN DATE: 6/5/07		CHECKED DATE:	
SCALE: DO NOT SCALE	PAGE 1 OF 2	REV. H	



#4 DUAL SEAL VENT PORT INSTALLATION INTERFACE
#4 PORT IAW SAE J1926 AND MS16142
USE SAE OR MS PORTING TOOL
(PARKER TOOL #Y34732)

PROPRIETARY NOTE All data and information contained or disclosed by this document is confidential and proprietary information of PREVCO Subsea LLC and all rights therein are expressly reserved. By accepting this material the recipient agrees that the material and the information therein is held in confidence and in trust and will not be used, copied, reproduced in whole or in part, nor its content revealed in any manner to others, except to meet the specific purpose for which it was delivered.	TOLERANCES UNLESS NOTED				CUSTOMER		DESCRIPTION					
	.X	.XX	.XXX	ANGLES	PREVCO SUBSEA LLC 00669-000				DUAL SEAL VENT PORT (#4) - INTERFACE DRAWING			
	±.050	±.010	±.003	±.5°								
	CONCENTRICITY .004 TIR				PROJECT		DRAWN BY:		CHECKED BY:			
	PRIMARY UNITS ARE INCHES				ISSUED BY:		ISSUED DATE:		DRAWN DATE: 6/5/07		CHECKED DATE:	
						SCALE: DO NOT SCALE		PAGE 2 OF 2		REV. H		